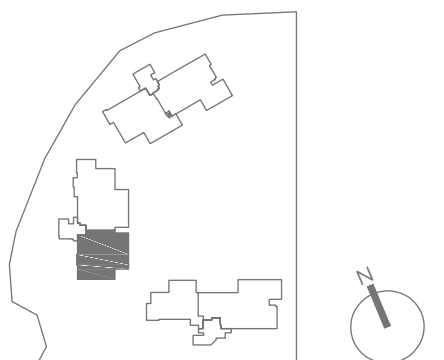


Tower 2
3-Bedroom
Type 3BR-a
167 sqm / 1,798 sqft
Unit #03-04 to 11-04



A horizontal timeline with three vertical tick marks. The first tick mark is labeled '0', the second is labeled '1', and the third is labeled '5M'.

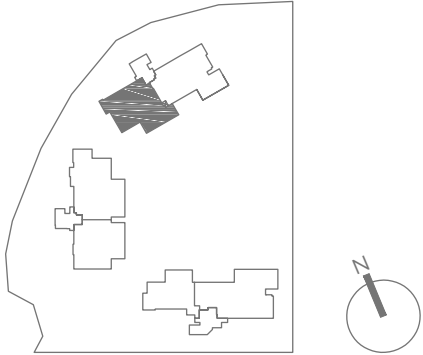
Plans are subject to change/amendments as may be required and/or approved by the Developer and/or the relevant authorities and do not form part of any offer or contract.



Tower 3
3-Bedroom
Type 3BR-b
173 sqm / 1,862 sqft
Unit #04-02 to 11-02



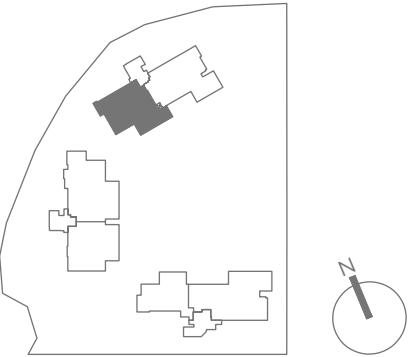
Plans are subject to change/amendments as may be required and/or approved by the Developer and/or the relevant authorities and do not form part of any offer or contract.



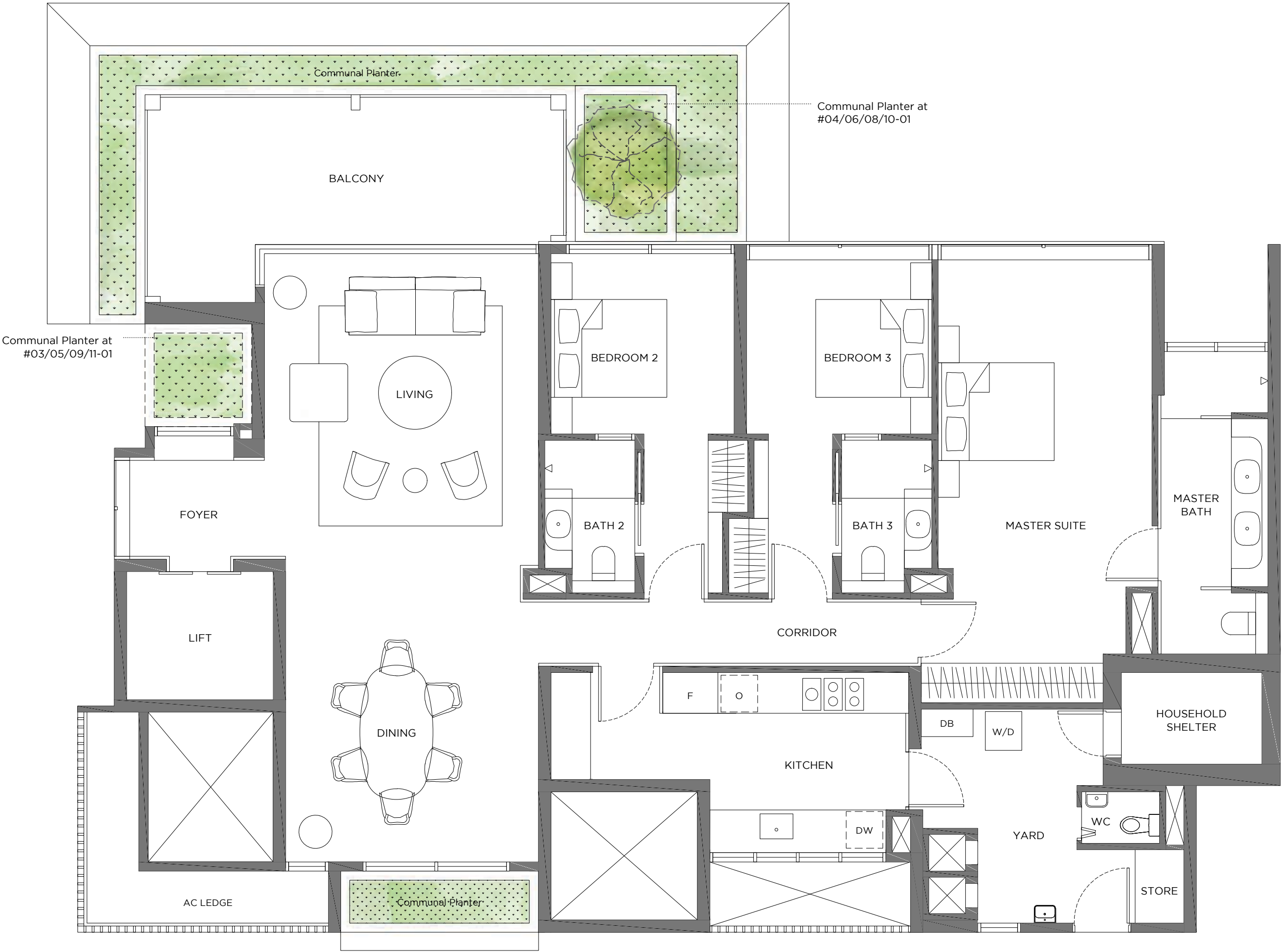
Tower 3
3-Bedroom
Type 3BR-b1
173 sqm / 1,862 sqft
Unit #03-02



Plans are subject to change/amendments as may be required and/or approved by the Developer and/or the relevant authorities and do not form part of any offer or contract.



Tower 3
3-Bedroom
Type 3BR-c
190 sqm / 2045 sqft
Unit #03-01 to 11-01



0 1 5M

Plans are subject to change/amendments as may be required and/or approved by the Developer and/or the relevant authorities and do not form part of any offer or contract.

